



1x16 Fiber Splice Closure

On the FTTx network, the fiber splice closure can take over functions of the optical cross connection cabinet and optical distribution box, and higher requirements are put forward for the number of inlet cables of the fiber splice closure.



1. Application

- Aerial-mounted ,wall-mounted

2. Feature

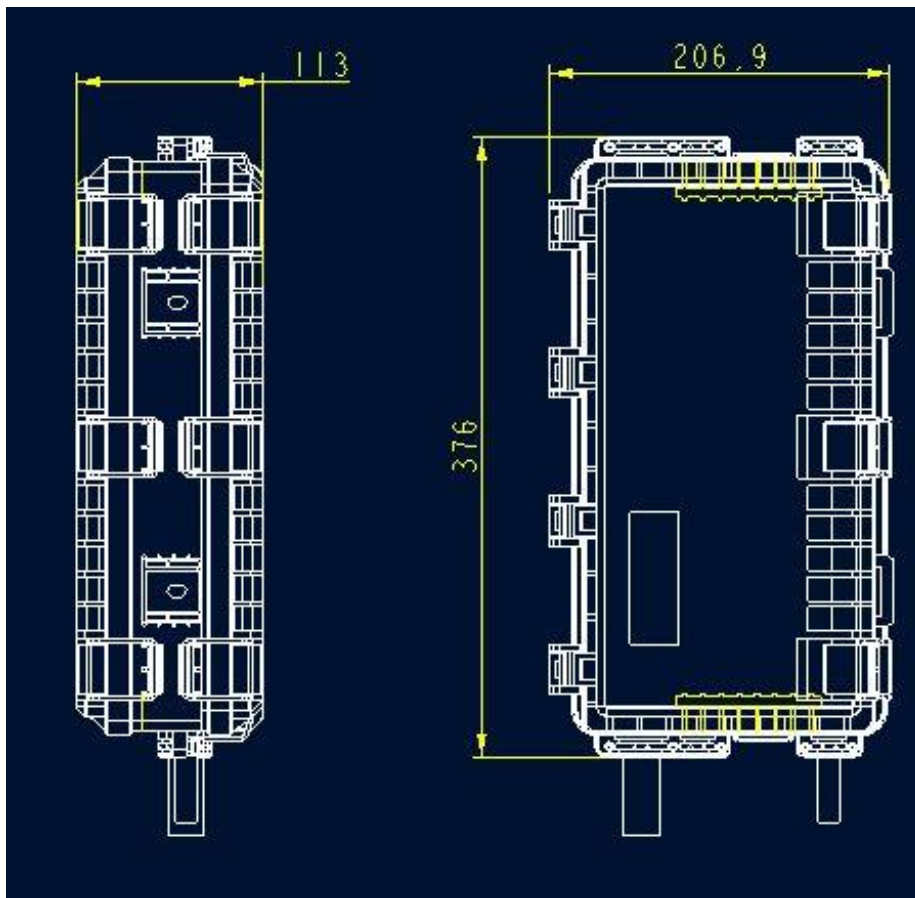
- It made of plastic , perfect appearance.
- Modular splitter design, it can install 1x16 ,1x8,1x4,1x2
- Easy to open and close, not need any tools
- Perfect fiber route design to ensure bend radius of fibers.
- Special design for water-proof,it can be IP 65.
- The closure has two space, each one is separately, operating independently.

3. Specification:

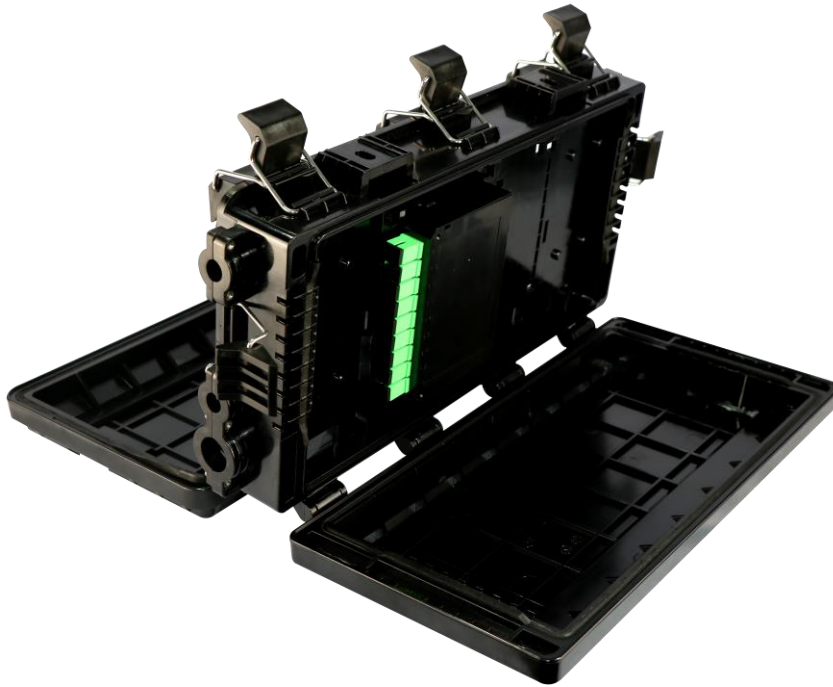
Standard : YD 814.1-2004 and YD 814.2-2005

Dimension	376x207x113	Remark
Max. fiber of splice	24 fiber(bundle)	
Subscribers	16	It's used for 3x2mm drop cable patch cord
Trunk cable	Input 3 Output 3	4 small holes diameter is 12.5mm; 2 big hole diameter is 21.5mm

4. Dimension: LxWxH=376x207x113mm



5. Structure



6. Accessories

Item	Description	Unit	Quantity				
			1x2 splitter closure	1x4 splitter closure	1x8 splitter closure	1x16 splitter closure	No splitter closure
1	SC/APC,2.0mm pigtail	pcs	4	6	10	18	10
2	Fiber protection heat shrink tubing	pcs	4	6	10	18	10
3	Mounting bracket for messenger wire	pcs	1	1	1	1	1
4	Cable tie length 3	pcs	10	10	16	20	10
5	Cable tie length 5	pcs	10	10	16	20	10
6	Cable tie length 12	pcs	5	5	5	5	5
7	Buffer tubes length ≥18	pcs	4	4	8	8	8
8	Buffer tubes marker identify (0~9)	set	1	1	1	2	2
9	Velcro Tape	pcs	1	1	1	1	1
10	Alcohol Tissue	pcs	1	2	4	8	8