

24~96 core Fiber Splice Closure

On the FTTx network, the fiber splice box can take over functions of the optical cross connection cabinet and optical distribution box, and higher requirements are put forward for the number of inlet cables of the fiber splice closure.

1. Application: aerial-mounted

2. Feature

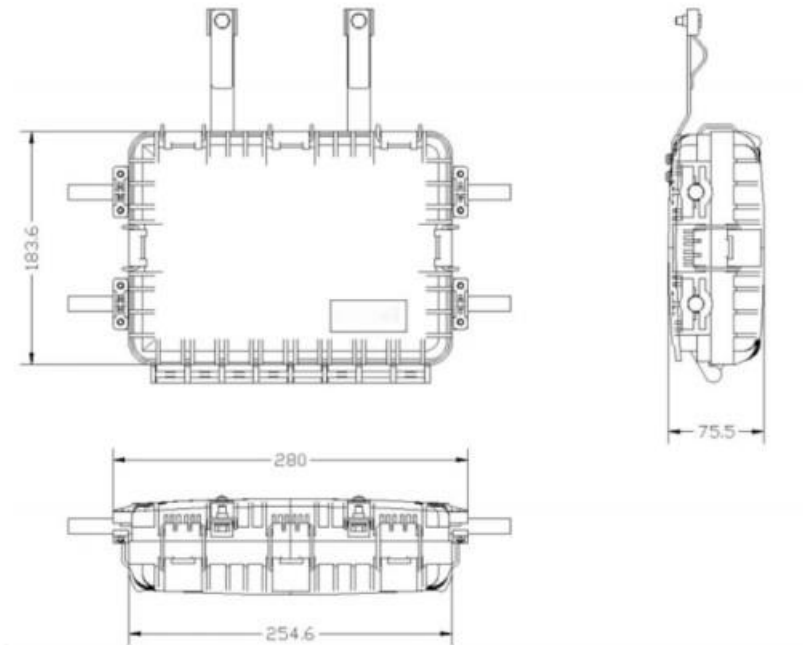
- It made of plastic , perfect appearance.
- Splitter installation: it can install 1x8,1x4 or 1x2 mini-type splitter in splice tray.
- Easy to open and close, not need any tools
- Perfect fiber route design to ensure bend radius of fibers.
- Special design for water-proof, it can be IP 65.

3. Specification:

Dimension	280x184x75	Remark
Max. of splice	96 core	
Max. fiber of splice tray	24 fiber(bundle)	It can install 4 pcs splice tray
Trunk cable	4	The diameter of hole is 12.5mm

4. Structure

1) Dimension



2) Appearance



3) Inside structure



Remark:

1. In total , it has 4 pcs 24 core fiber splice tray
2. Each splice tray can install 1 pcs 1x8 mini type splitter.
3. Special design, the splice tray can be vertically fixed which is convenient for splicing.
4. Reasonable design which can provide enough space to store the fiber cable .