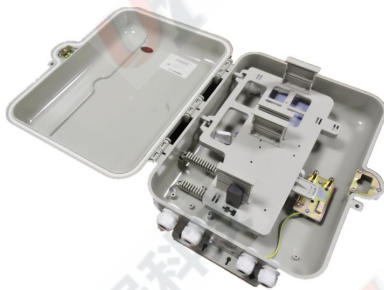


# FAT-FTTH

FAT-AP01-32 Terminated Fiber  
Access Terminal



Model No.	FAT-AP01-32
Dimension( H x W x D)	420x345x110mm
Subscribers	2pcs 1x16 or 4pcs 1x8 PLC Splitter
Max Capacity Of Splicing	24
Max Number of Trays	1
Input/ Output Port	2 (Φ14.5mm) / 2 (Φ14.5mm)
Bending Radius	≥30mm



- 1 Plastic material
- 2 Strong and beautiful
- 3 Can be used repeatedly



- 1 PG holes can be compatible with optical cables of different sizes.



- 1 Integrated with cable splicing and management rods

**SHENZHEN U1**  
TELECOMMUNICATIONS CO.,LTD

6th Floor, Building 1,  
Changxing Hi-tech Industrial Park,  
Shajing Street, Baoan District,  
Shenzhen China 518104

**CALL: +86 0755 - 2667 3886**

Tel:+86 0755-2667 3886  
Fax:+86 0755-2682 1069  
Web: www.u1conec.com  
E-mail: admin@u1conec.com