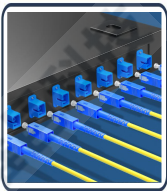


ADAPTER-FTTH

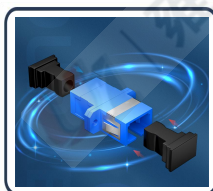
SC-SC Fiber optical adapter



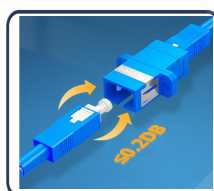
Connector type.	SC-SC
SC-SC	Single /multi mode
Durability	500 times
Insertion loss	≤ 0.2dB
Return Loss	≥ 50dB
Flame retardant	UL94-V0
Operating temperature	-25~70°C
Dust proof cap	Black, transparent, semitransparent, built-in, shutter



Good isolation



Good exchangeability



Low insertion loss



Iron sheet design



SC Port

SHENZHEN U1
TELECOMMUNICATIONS CO.,LTD

6th Floor, Building 1,
Changxing Hi-tech Industrial Park,
Shajing Street, Baoan District,
Shenzhen China 518104

CALL: +86 0755 - 2667 3886

Tel:+86 0755-2667 3886
Fax:+86 0755-2682 1069
Web: www.u1conec.com
E-mail: admin@u1conec.com