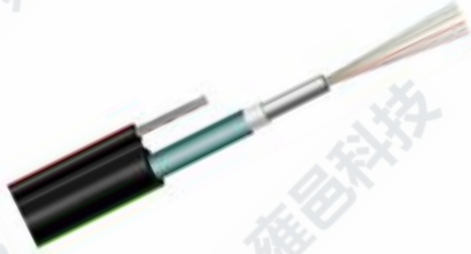
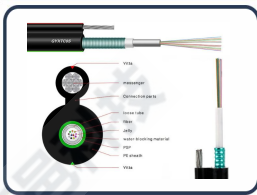


CABLE-FTTH

GYXTC8S Optical Fiber Cable



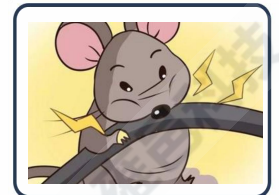
Model NO.	GYXTC8S
Fiber type	G652
Sheath color	Black
Sheath material	PE
Cable dimension (mm)	7.0*14.0/8.0*15.1, Tolerance±0.1
Cable weight (Kg/km)	118/129
Min. bending radius (mm)	30 (Static) 15(Dynamic)
Attenuation (dB/km)	≤ 0.4 at 1310nm ≤ 0.3 at 1550nm



- 1 Waterproof layer between steel tape and cable core.
- 2 Figure 8 cross section



- 1 Self-support Hanging.
- 2 Long distance communication.



- 1 Steel tape armored, excellent anti-crush properties.
- 2 Good anti-bullet properties.

SHENZHEN U1
TELECOMMUNICATIONS CO.,LTD

6th Floor, Building 1,
Changxing Hi-tech Industrial Park,
Shajing Street, Baoan District,
Shenzhen China 518104

CALL: +86 0755 - 2667 3886

Tel:+86 0755-2667 3886
Fax:+86 0755-2682 1069
Web: www.u1conec.com
E-mail: admin@u1conec.com