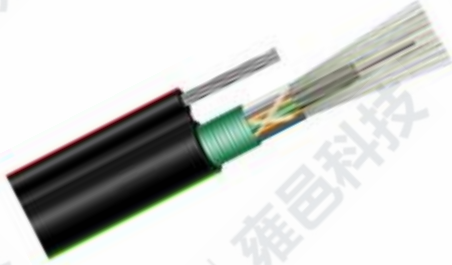


CABLE-FTTH

GYTC8A Optical Fiber Cable



DUST-PROOF



WATER-PROOF



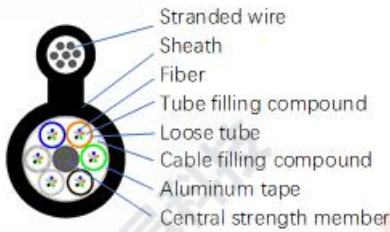
WORKING AT HEIGHTS



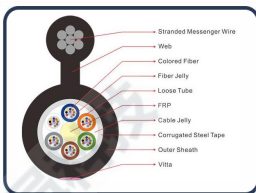
HIGH TEMPERATURE



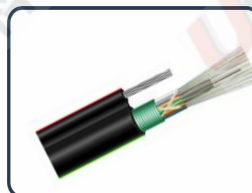
WALL-HUNG TYPE



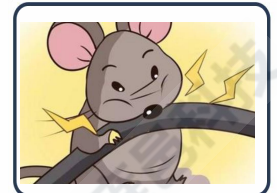
Model NO.	GYTC8A
Fiber type	G652
Sheath color	Black
Sheath material	PE
Cable dimension (mm)	9.5*18.3-15.0*24.3, Tolerance±0.1
Cable weight (Kg/km)	218-350
Min. bending radius (mm)	30 (Static) 15(Dynamic)
Attenuation (dB/km)	≤ 0.4 at 1310nm ≤ 0.3 at 1550nm



- 1 Steel wire used as the central strength member
- 2 Loose tube filling compound



- 1 High tensile strength of stranded wires meet the requirement of self-supporting and reduce the installation cost.



- 1 Steel tape armored, excellent anti-crush properties.
- 2 Good anti-bullet properties

SHENZHEN U1
TELECOMMUNICATIONS CO.,LTD

6th Floor, Building 1,
Changxing Hi-tech Industrial Park,
Shajing Street, Baoan District,
Shenzhen China 518104

CALL: +86 0755 - 2667 3886

Tel:+86 0755-2667 3886
Fax:+86 0755-2682 1069
Web: www.u1conec.com
E-mail: admin@u1conec.com